

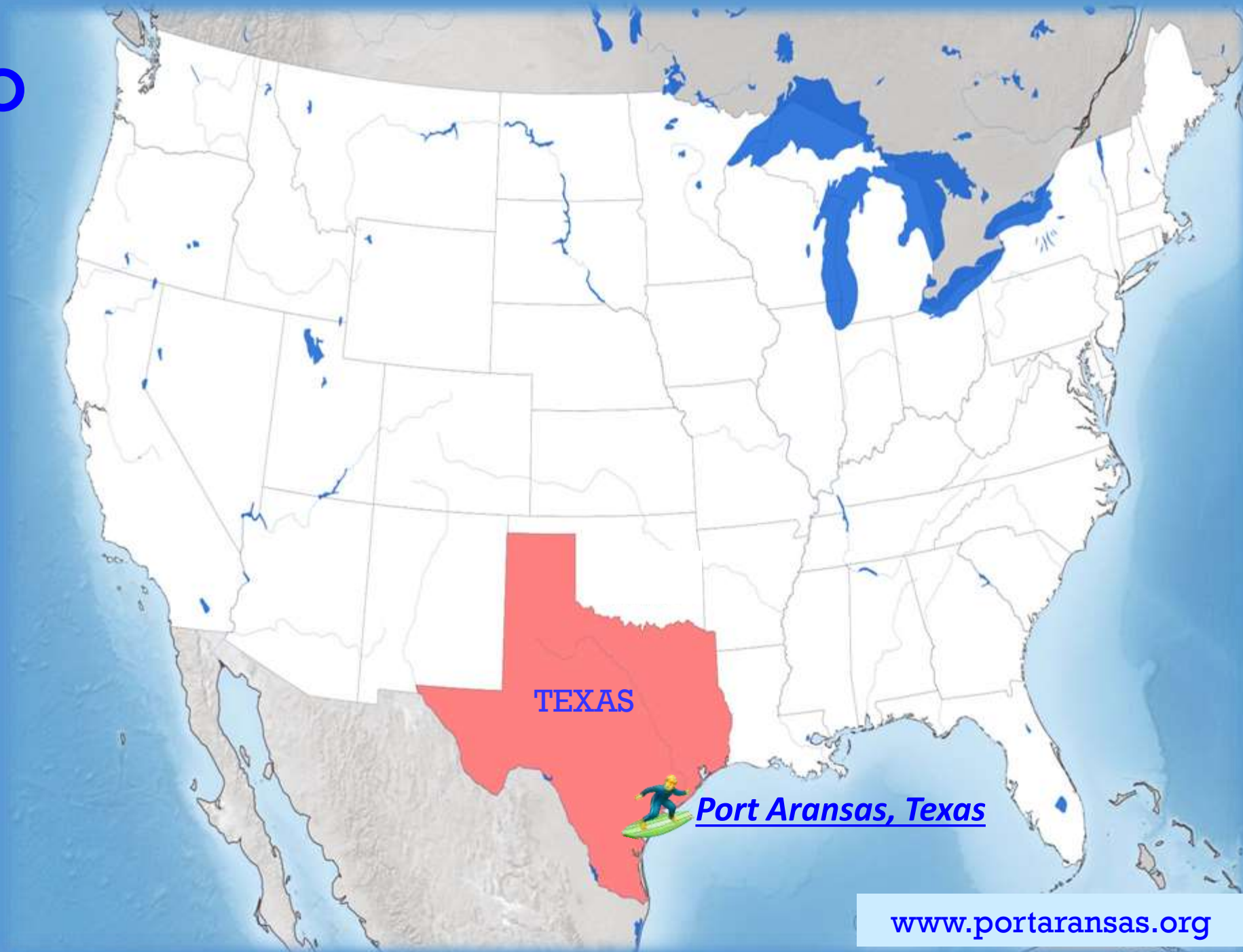
PORT ARANSAS & MUSTANG ISLAND

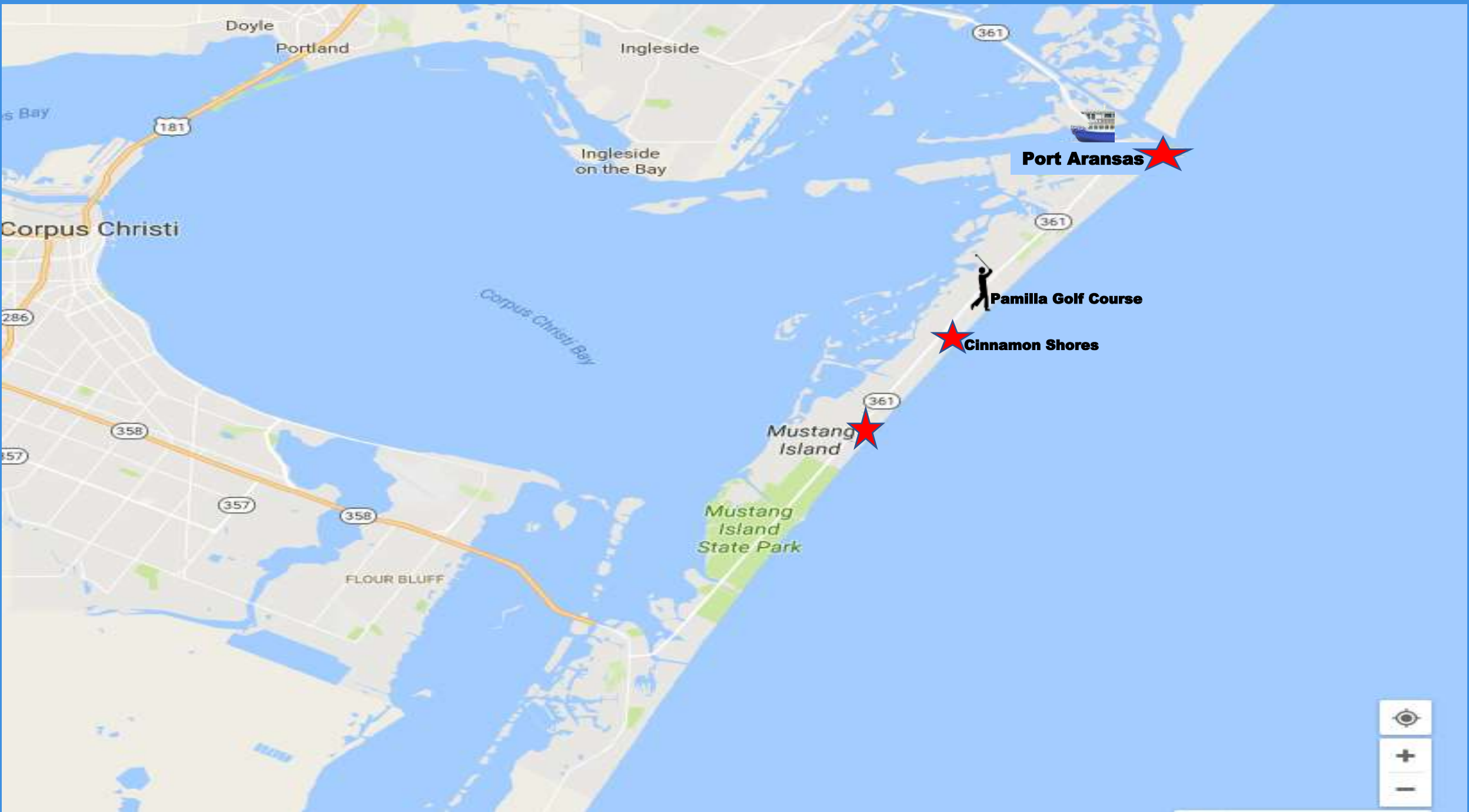


Discover “*the*” Island Life



Welcome to TEXAS





Port Aransas

Pamilla Golf Course

Cinnamon Shores

Mustang Island

Mustang Island State Park

FLOUR BLUFF

Corpus Christi

**Doyle
Portland**

Ingleside

**Ingleside
on the Bay**

Corpus Christi Bay



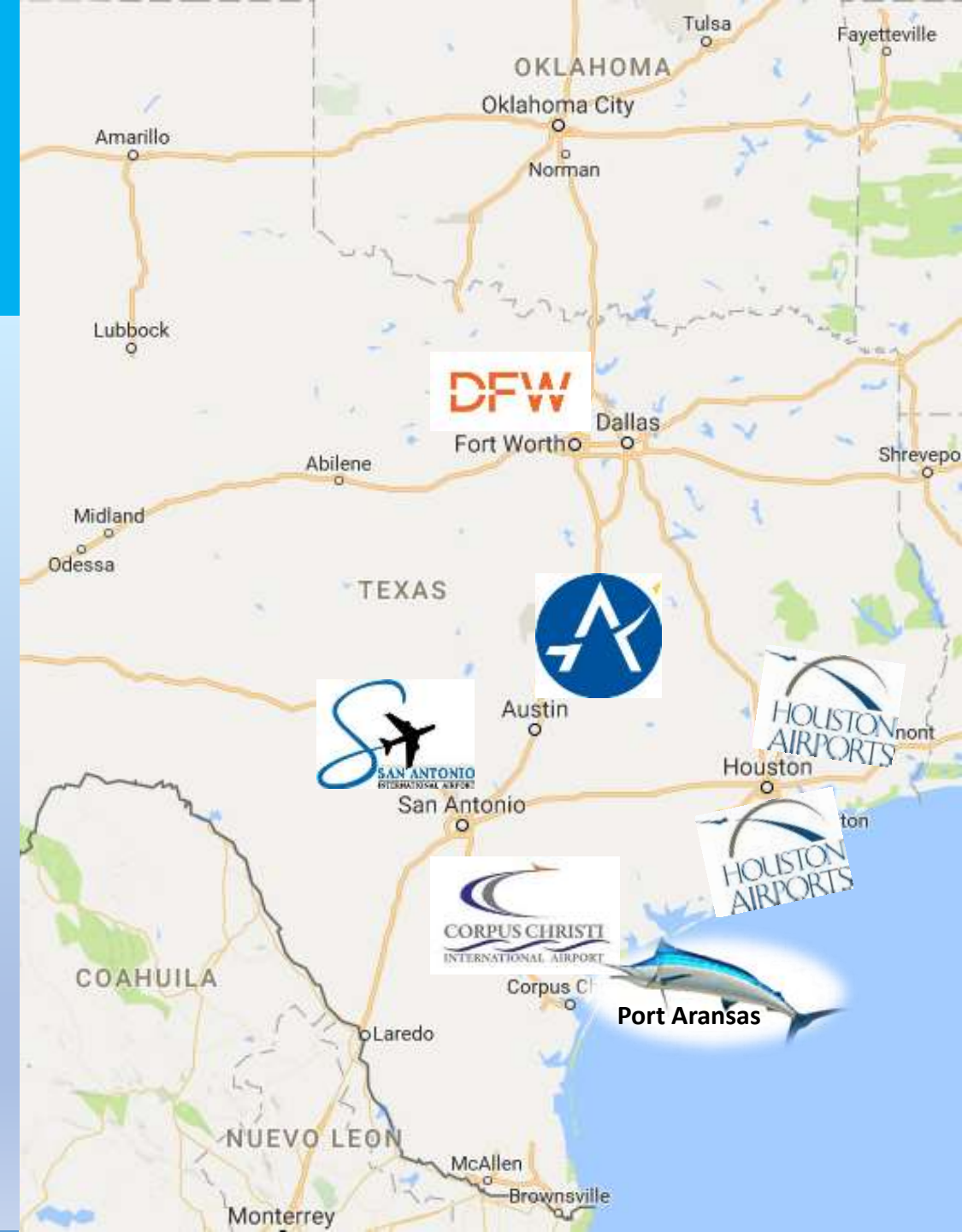
AIRPORT DISTANCES

Port Aransas is within close proximity
to SIX international airports

Airport

Drive time to Port A

- Corpus Christi International (CRP) 30 min.
- San Antonio International (SAT) 2.5 hrs.
- Austin-Bergstrom (AUS) 3 hrs.
- Houston Hobby (HOU) 3.5 hrs.
- Houston International (IAH) 4 hrs.
- Dallas/Fort Worth (DFW) 6.5 hrs.



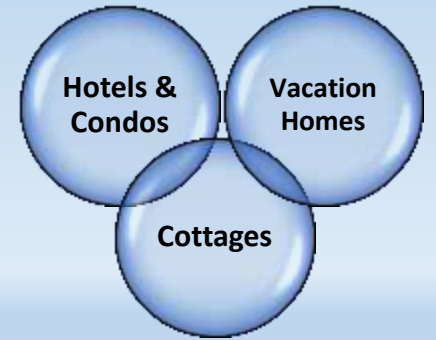
Destination Overview

- ▶ Over 5 Million People Visit A Year
- ▶ 18 Miles of Drivable & Wide Beach
- ▶ Over 300 Plus Days of Sunshine
- ▶ Average Temperature Range is 68° – 92°
- ▶ Lodging- Over 4,000 Accommodations
- ▶ Sportfishing & Water Sports Mecca
- ▶ NATURE Epi – Center of Texas

Original Golf Cart Destination



Lodging for Every Lifestyle & Budget

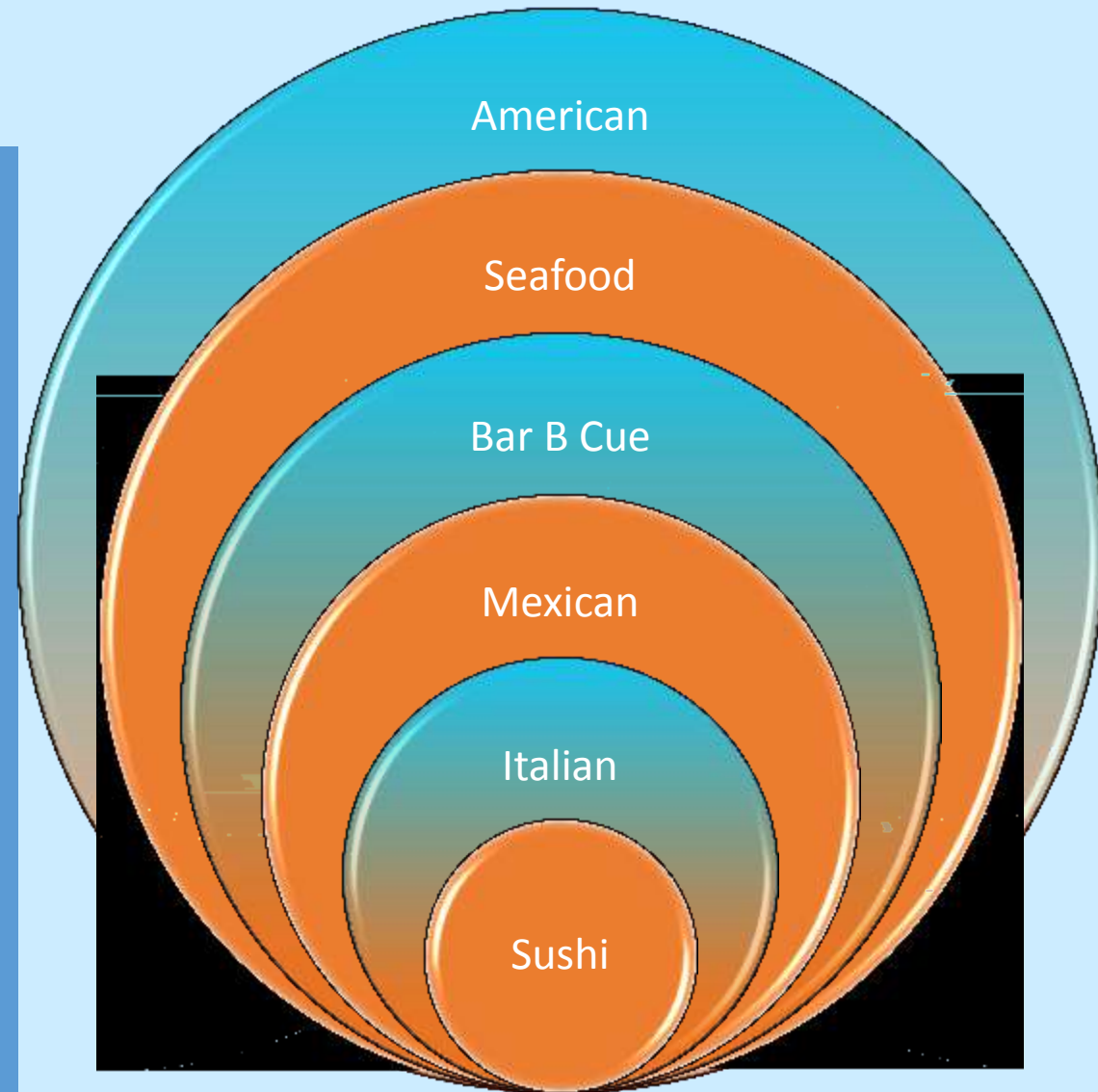


- Lodging- Over 4,000 Accommodations
- Large Group Accommodations
- Warm Port Aransas Hospitality



Restaurants

- 
- 
- 





Shopping

Boutiques

Beachware &
Swimwear

Art Galleries

Specialty
Shops

Surf Gear

Coastal
Souvenirs



Art Center



The Night Lights UP When The Sun Goes Down

- Live Music
- Dancing
- Karaoke
- Belt Sander Races
- C.S. Bingo



Will van Overbeek/TxDOT



DESTINATION EXPERIENCES....
endless options.

Extreme Adventures



Soft Adventures

❖ Kayaking

❖ Seashell
Combing

❖ Dolphin Watching

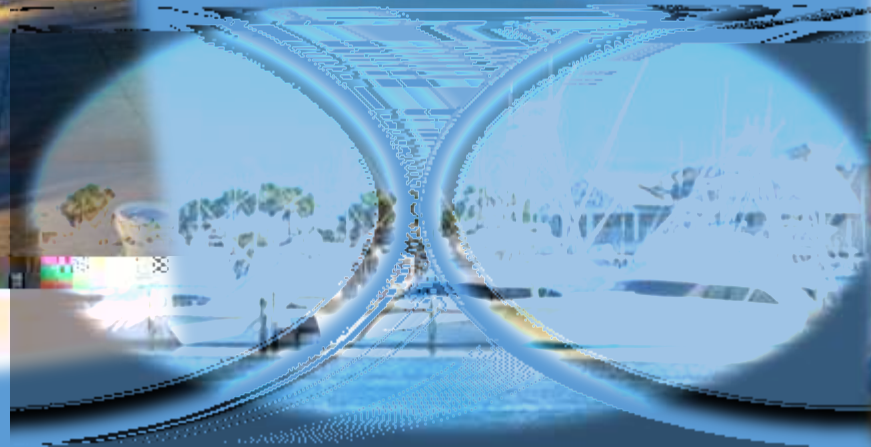
❖ Nature Trails

❖ Sunset Cruises



World Class Fishing

- Offshore Fishing
- Bay Fishing
- Surf Fishing
- Multitude of Fish Species



Discover our.....

Arts

Culture

Heritage Trail

- Port Aransas Historical Museum
- University of Texas Marine Science Education Center
- Farley Boat Works
- Port Aransas Community Theatre
- Port Aransas Art Center



Farley Boat Works



Port Aransas Historical Museum



Nature Trails, Birds and More



Contacts

Jeffrey Hentz – President/CEO
jhentz@portaransas.org

Shelley Mayer Witcher – Marketing Development
shells@portaransas.org

Joan Garland – Special Events & PR Manager
jgarland@portaransas.org

Sheri Johnson – Marketing & Communications Manager
sheri@portaransas.org



**Mustang
Island/Port
Aransas
Hospitality**

**Year Around
Destination
365 Days a
Year**

**All Points
Accessible**

